

## Compact LED Driver Fits Inside J-box, Universal Input Incandescent (120VAC) Dimming

### Features and Benefits

- High efficiency constant current driver in compact metal case fits inside most 4S j-boxes
- UNV input 120-277VAC
- Dimming < 5% (120VAC only) with triac/incandescent (forward phase) and ELV (reverse phase) dimmers
- Short circuit protection
- Available in three outputs: 420mA, 500mA and 700mA



PS23-700C-TRIAC-UNV Series

### Compatible LED Modules

Nominal DC Output to Module ..... See Table 1

### Ratings and Performance Specifications

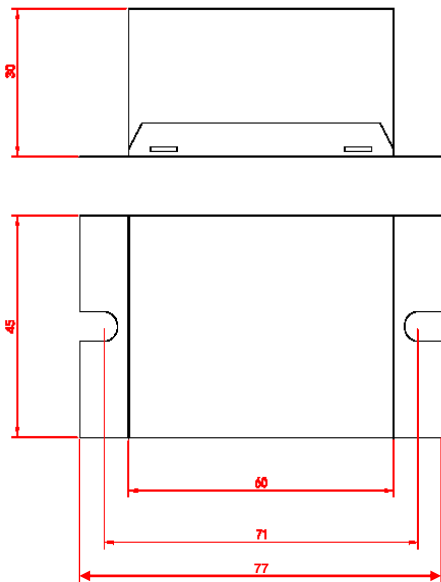
Nominal Power Consumption @ 120VAC .....	See Table 1
Nominal Input Voltage .....	See Table 1
Maximum Driver Case Temperature @ designated Tmp .....	+75°C
Maximum Operating Range Ambient Temperature (Ta) .....	-30 to +50°C
Recommended Screw Installation Torque .....	75 inch ounces
Nominal Power Factor .....	> 0.9
Nominal Weight .....	80 grams
Safety/Compliance .....	UL E256805

### Application Notes

1. The proper driver case temperature at designated (T<sub>mp</sub>) is critical to ensure proper performance and long life. Careful design consideration required for factors such as ambient conditions (for example weather and surrounding atmosphere inside luminaire) and proximity to heat generating components.
2. Abnormal operating conditions such as elevated ambient temperatures can be expected to negatively impact output, product lifetime and/or product performance.
3. Dims only at 120VAC with most triac and 3-wire ELV dimmers such as Lutron® Diva and Maestro. Complete list of compatible dimmers and application notes available.

## Physical Dimensions

AC INPUT  
 BLK – ACH  
 WHT – ACN  
 6" LEADS NOMINAL  
 18 AWG SOLID



DC OUTPUT  
 RED – (+)  
 BLACK – (-)  
 6" LEADS  
 NOMINAL  
 18-22 AWG  
 SOLID OR  
 STRANDED

HEIGHT: 1.18" (30MM)  
 WIDTH: 1.77" (45MM)  
 LENGTH: 2.36" (60MM)  
 OVERALL LENGTH: 3.03" (77MM)  
 MOUNTING HOLES: 2.84 (72MM)  
 HOLE WIDTH: 0.154 (3.9MM)

TOLERANCES:  
 X.XX = ± 0.01  
 X.XXX = ± 0.005

**Table 1, Performance Characteristics at 25°C**

Part Number	Maximum Output Power (DCW)	Nominal Input Voltage (VAC)	Dimming	Nominal Output Current (mADC)	Output Voltage Range (VDC)	Efficiency @ 120VAC, Max Load
			with Triac & ELV Dimmers (VAC)			
PS15-420C-TRIAC-UNV	15	120-277	120VAC (only)	420	20 - 40	80%
PS18-500C-TRIAC-UNV	18	120-277	120VAC (only)	500	20 - 40	80%
PS23-700C-TRIAC-UNV	23	120-277	120VAC (only)	700	16 - 32	80%

Contact Forzlux for complete list of compatible dimmers and application notes

### Packaging

Product is marked with SKU and lot information.  
 Sold in groups of (1) unit(s) and packaged with SKU and lot information.

### Warranty

5-Year limited warranty in accordance with published warranty conditions. Product must be used with compatible components (modules, drivers, engines and/or accessories) and no maximum ratings (such as Ts) shall be exceeded during any operating conditions of the system. If product is used with other manufacturer's product, compatibility must be recognized in writing by Forzlux.

Forzlux owns the following United States patents of which may be applicable to the design or manufacture of this product: 6712486, 6578986, 6846093, 7114831, 7306353, 7102172, 7108396, 7329024, 7387406, 7582911, 7649327, 8926145, 8729810. Additional granted patents, patents pending and other IP protection rights may apply.