

Miniature PCB Constant Current LED Driver For Low Voltage Landscape

Features and Benefits

- Miniature constant current converter for use with AC magnetic transformers or DC electronic transformers (see note 4)
- Input wire 12", 18AWG-2 core, SPT-1W burial rated
- Can run 1, 2, or 3 LEDs in series
- Dimming < 50% on low voltage magnetic dimmer on AC side of magnetic transformer
- Includes mounting hole for mechanical attachment
- Encapsulated versions, other wire lengths and/or IP67 waterproof male/female connector versions available



Size relative
to dime

Compatible LED Modules

Nominal DC Output to Module See Table 1

Ratings and Performance Specifications

Nominal Input Voltage	See Table 1
Maximum Temperature @ input bridge (un-encapsulated)	+105°C
Maximum Driver Case Temperature @ designated Tmp (encapsulated)	+90°C
Maximum Operating Range Ambient Temperature (Ta)	-20 to +60°C
Recommended Screw Installation Torque (un-encapsulated)	75 inch ounces
Nominal Weight (un-encapsulated)	45 grams
Safety/Compliance	UL E256805

Application Notes

1. The proper driver case temperature at designated (Tmp) is critical to ensure proper performance and long life. Careful design consideration required for factors such as ambient conditions (for example weather and surrounding atmosphere inside luminaire) and proximity to heat generating components.
2. Abnormal operating conditions such as elevated ambient temperatures can negatively impact output, product lifetime and/or performance.
3. Dims with low voltage magnetic dimmer on AC side of magnetic transformer. For assistance, contact Permlight Technologies.
4. Not compatible with AC electronic transformers except special transformers such as Hatch RS LED series.

Physical Dimensions

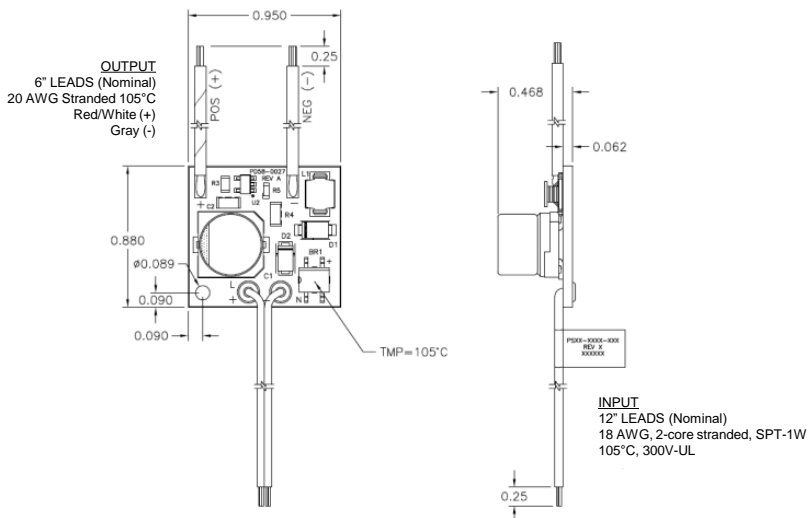


Table 1, Performance Characteristics at 25°C

Part Number	Maximum Output Power (DCW)	Nominal Input Voltage (VAC/VDC)	Dimming with Low Voltage Magnetic Dimmer with (3) LED*	Nominal Output Current (mA/DC)	Nominal Output Voltage @ 12VAC/DC Input** (VDC)	Nominal Efficiency with (3) LED	Nominal Power Consumption with (3) LED (ACW)
PS11-133C-818-1	11	8-18	Yes	133	2.8 - 9.6	75%	1.60
PS11-179C-818-1	11	8-19	Yes	179	2.8 - 9.7	75%	2.15
PS11-256C-818-1	11	8-18	Yes	256	2.8 - 9.6	75%	3.07
PS11-450C-818-1	11	8-18	Yes	450	2.8 - 9.5	75%	5.40

* May not dim with (1) LED, for assistance contact Forzlux

** Output voltage is typically 2V lower than input voltage

Options available

Encapsulated versions, other wire lengths and/or IP67 waterproof male/female connector.

Packaging

Product is marked with SKU and lot information.

Sold in groups of (1) unit(s) and packaged with SKU and lot information.

Warranty

5-Year limited warranty in accordance with published warranty conditions. Product must be used with compatible components (modules, drivers, engines and/or accessories) and no maximum ratings (such as Ts) shall be exceeded during any operating conditions of the system. If product is used with other manufacturer's product, compatibility must be recognized in writing by Forzlux.

Forzlux owns the following United States patents of which may be applicable to the design or manufacture of this product: 6712486, 6578986, 6846093, 7114831, 7306353, 7102172, 7108396, 7329024, 7387406, 7582911, 7649327, 8926145, 8729810. Additional granted patents, patents pending and other IP protection rights may apply.